

M/S JOANNA K



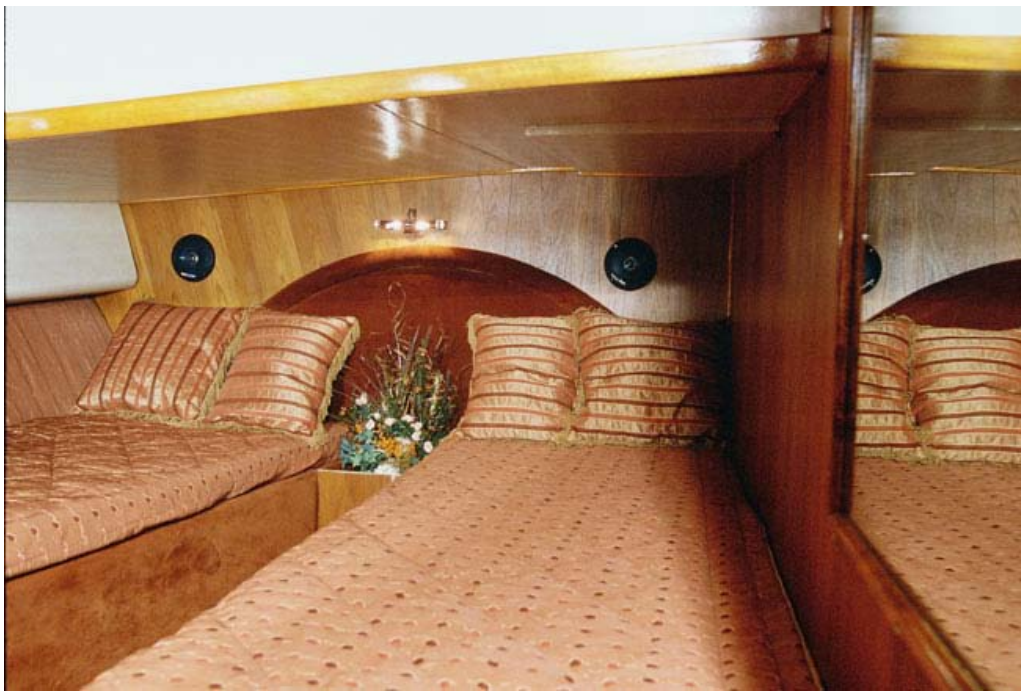
M/S JOANNA K. (length 72 ft) offers accommodation to 8 guests in 4 cabins. Two cabins with two single beds each and private facilities and two double bedded cabins that share a facility. Each cabin has refrigerator, mini bar, radio/CD player. The saloon has a DVD, TV LCD, radio/CD player for guests' entertainment. Her aft deck is perfect for "al fresco" dining. The yacht is equipped with various sea toys for enjoyment.



Joanna K, a traditional wooden ship, was completely rebuilt in 2004. In the bridge area of the yacht you will find our comfortable lounge for 8 individuals, you can enjoy your DVD in a LCD television. In the rear deck there is a dining room for 8 individuals in order to dine, while in the forward deck you can enjoy the sun on the sun beds all day long. For your entertainment our ship allocates Jet Ski, Tubes, sandals Ski and big spaces in order to you enjoy the fishing in the Greek seas with the complete luxurious equipment.



The yacht has Internet Connection and is completely Air Conditioned.













SPECIFICATION FOR JOANNA . K

TYPE : M/S Traditional

COMPLETELY REBUILD : 2004

MATERIALS : Pine Wood

Iroco Wood

Tik Wood

LENGTH : 72 ft

WIDTH : 19 ft

DRAFT : 8,3 ft

WEIGHT : 60 tons

ENGINES : 2 x 360 hp DAEWOO 2004

GENERATOR : 30 KWA three-phase

AIR CONDITIONING : 45.000 BTU

CABINS : 2 Cabins single bed each one with own bathroom , refrigerator minibar radio CD

2 Cabins a double bed each one with a common bathroom between them refrigerator minibar , radio cd

BRIDGE : Salon for 8 persons with dvd ,tv LCD

Radio CD , Ps2 and sound from B&W , governing area with full system equipment piloting

BACK DECK : Dining room for 8 person , deck chairs sunbath.

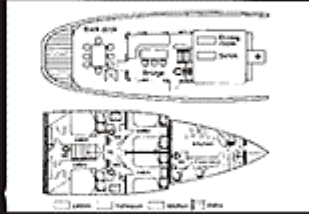
FRONT DECK : Deck chairs sunbath

PROW PART : Full kitchen and crew room with its own bathroom

ENTERTAINMENT : Jet ski , tender 3.10m , tubes , ski sandals , double dog , full equipment for fishing

CREW SIZE : 3

SPEED : 10 miles



2012 Rates:

Special High & Low season daily rate is €1500 plus extras.

Above charter price includes :

- *Yacht & Equipment*
- *Crew of 3 (Captain, Sailor/Steward, Cook)*
- *Full sets of bed linens, towels*
- *Insurance of the boat and the crew*
- *Variety of Sea Toys*
- *Harbour fees in Greece (not Marinas)*
- *All operation expenses of the yacht and crew including crew wages & food*

Not included in above charter prices:

- *V.A.T. 6.5%*
- *Fuel consumption for the engines at 90 lt/hr*
- *Fuel consumption for the generators at 70 lt/day*
- *Guests' Food and Drink provisioning (rates upon request)*

- *Gasoline for water toys (if any)*
- *Jet Ski (upon request – at an extra cost)*
- *Delivery and / or redelivery yacht fees*
- *Dues for crossing Corinth Canal (if any)*
- *Dues for entering non-Greek waters*
- *Communication costs*
- *Private Marina Fees, Land Transfers & Tours*
- *Crew gratuities*

Note: (prices are subject to VAT fluctuation)

