

JULY



SPECIFICATIONS

Length: 20.50 metres (67' 3")

Beam: 5.31 metres (17' 5")

Draft: 1.50 metres (4' 11")

Number of crew: 3

Built: 2009

Builder: Aicon

Naval architect:

Flag: Greek

Hull construction: GRP

Hull configuration:

Air conditioning

EQUIPMENT

Engines: Engines 2 MAN V12 1224hp

Generator Yanmar 20kw

Cruising speed: 22

Fuel consumption: 380 Litres/Hr

ACCOMMODATION

Number of cabins: 4

Cabin configuration: 2 Double, 2 Twin

Bed configuration:

Number of guests: 8

WATER SPORTS

Tenders + toys: Tender 3.80m with Suzuki 40HP

Canoe

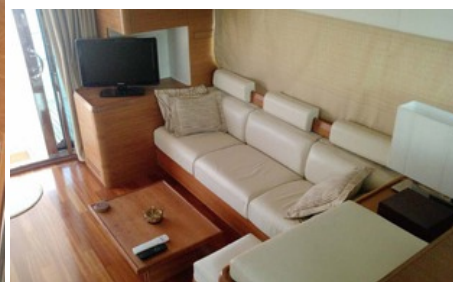
Tubes

Water ski equipment for adults and kids

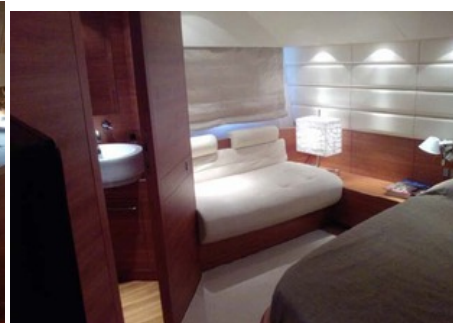
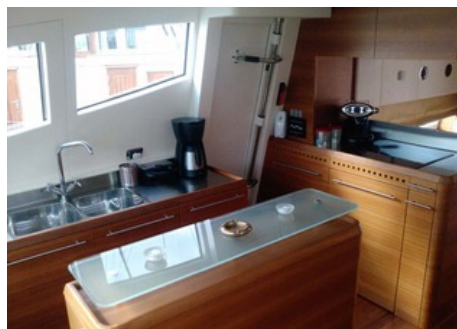
Snorkeling equipment

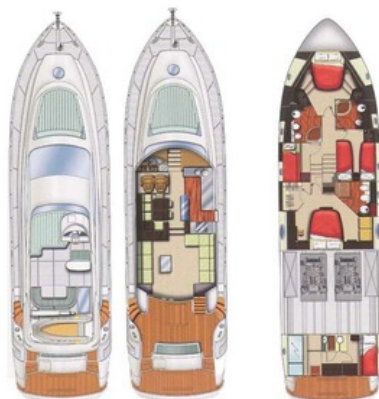


Salon 1



Salon 2



Galley**Master cabin 1****VIP cabin****Master cabin 2****Layout**

This document is not contractual. All specifications are given in good faith and offered for informational purposes only. The publisher and company does not warrant or assume any legal liability or responsibility for the accuracy, completeness, or usefulness of any information and/or images displayed. Yacht inventory, specifications and charter prices are subject to change without prior notice. None of the text and/or images used in this brochure maybe reproduced without written consent from the publisher.